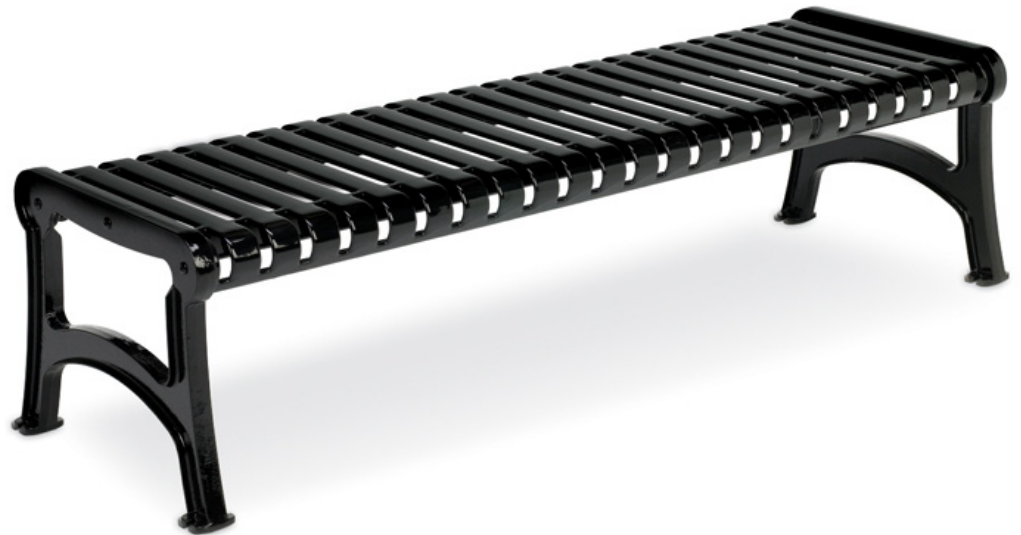
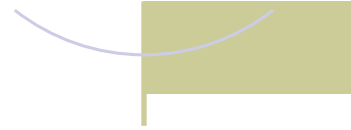




Houghton Backless



Model	Dimensions	Ship Wt.
T2L1370	18 3/4 " H x 24 " W x 51 5/8 " L 4 ' Flat Bench Cast Iron Ends	116 lbs.
T2L1371	18 3/4 " H x 24 " W x 75 5/8 " L 6 ' Flat Bench Cast Iron Ends	143 lbs.
T2L1374	18 3/4 " H x 24 " W x 100 1/4 " L 8 ' Flat Bench Cast Iron Ends	206 lbs.
T2L1375	18 3/4 " H x 24 " W x 100 1/4 " L 12 ' Flat Bench Cast Iron Ends	260 lbs.

Distinctive horizontal slats on this classic Houghton bench provide truly comfortable seating. Plastisol coated benches are protected with the proprietary Fusion Advantage™ multi-stage process for extreme durability in any weather.

T2 Site Amenities

1805 Spruce St.
Highland Park, IL 60035
Phone: 847-579-9003
E-Mail info@t2-sa.com
www.t2-sa.com

